

SAVANNAH, GEORGIA

AL-380 (FAA)

22195

WAAS CH 40015 W28A	APP CRS 277°	Rwy Idg TDZE Apt Elev 9351 50 50
-------------------------------------	---------------------	---

RNAV (GPS) Z RWY 28

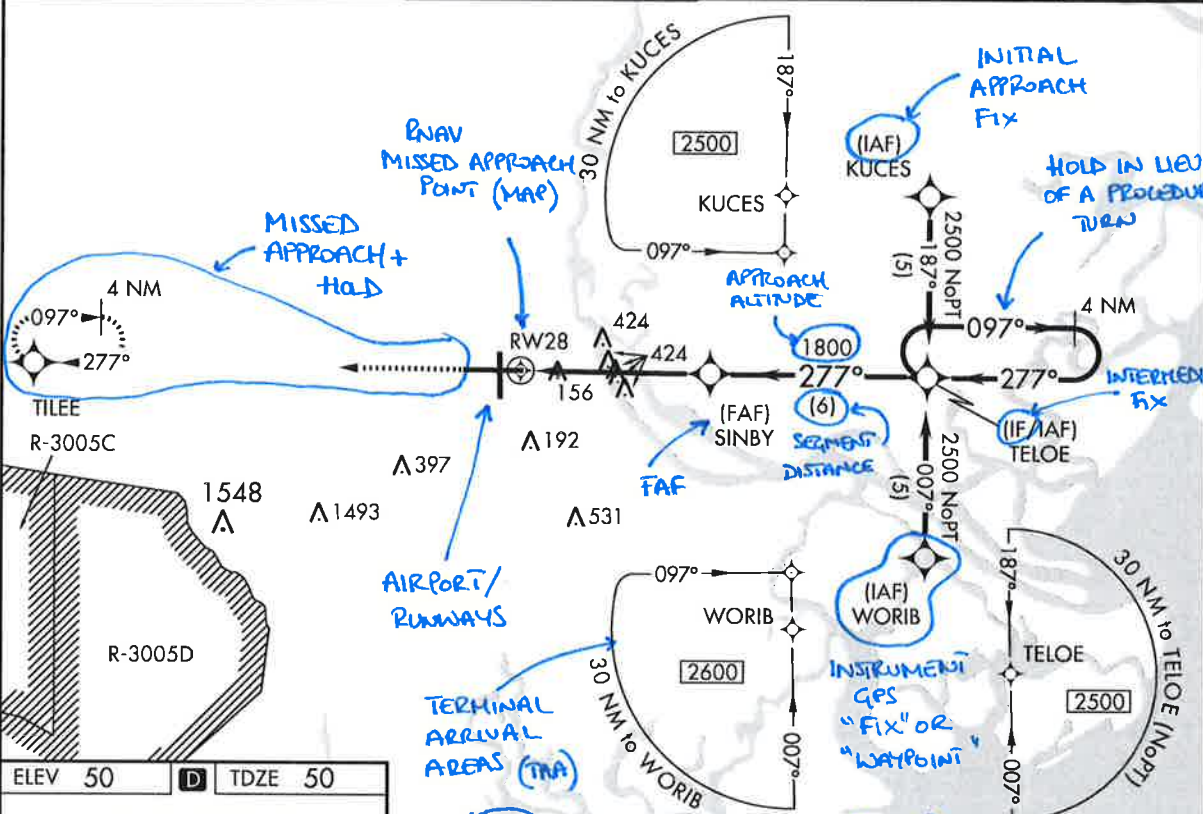
SAVANNAH/HILTON HEAD INTL (SAV)

RNP APCH.

For uncompensated Baro-VNAV systems, LNAV/VNAV (NA) below -15°C (5°F) or above 49°C (120°F).

MISSED APPROACH: Climb to 2600 direct TILEE and hold.

ATIS 123.75	SAVANNAH APP CON* 125.3 371.875	SAVANNAH TOWER* 125.975 (CTAF) 257.8	GND CON 121.9 348.6	CLNC DEL 119.55 291.775	UNICOM 122.95
--------------------	--	--	----------------------------	--------------------------------	----------------------



ELEV 50 TDZE 50

FINAL APPROACH COURSE (FAC)



2600	TILEE	VGSI and RNAV glidepath not coincident (VGSI Angle 3.00/TCH 66).	TELOE	4 NM Holding Pattern
*LNAV only.		SINBY	TELOE	2500
RWY 28		*1.8 NM to RWY 28	1800	1800
1.8 NM		3.5 NM	6 NM	GP 3.00° TCH 52

CATEGORY	A	B	C	D
LPV DA	MINIMUMS MSL 307-1 (257)		300-1 REQ. VISIBILITY	
LNAV/VNAV DA	431-1¼		381 (400-1¼) MINIMUMS AGL	
LNAV MDA	680-1	630 (700-1)	680-1¾	630 (700-1¼)
CIRCLING	680-1	630 (700-1)	740-2 690 (700-2)	740-2¼ 690 (700-2¼)

SAVANNAH, GEORGIA
Amdt 2C 10SEP20

32°08'N-81°12'W

SAVANNAH/HILTON HEAD INTL (SAV) RNAV (GPS) Z RWY 28

NOTES
ALTERNATE MINIMUMS

VALIDITY

AIRPORT THUMBNAIL

DECISION ALTITUDE
MINIMUM DESCENT ALTITUDE

CITY/STATE

PROCEDURE NAME

LOCATION AIRPORT

MISSED APPROACH INSTRUCTIONS

USEFUL FREQUENCIES

PLAN VIEW

PROFILE VIEW

LINE OF MINIMA

SE-4, 22 FEB 2024 to 21 MAR 2024

SE-4, 22 FEB 2024 to 21 MAR 2024

NOT AUTHORIZED